



ELECTRONIC COPY

LABORATORY GROWN DIAMOND REPORT

May 2, 2025	
IGI Report Number	LG705516481
Description	LABORATORY GROWN DIAMOND
Shape and Cutting Style	OVAL BRILLIANT
Measurements	9.44 X 6.56 X 3.99 MM

GRADING RESULTS

Carat Weight	1.54 CARAT
Color Grade	D
Clarity Grade	VS 1

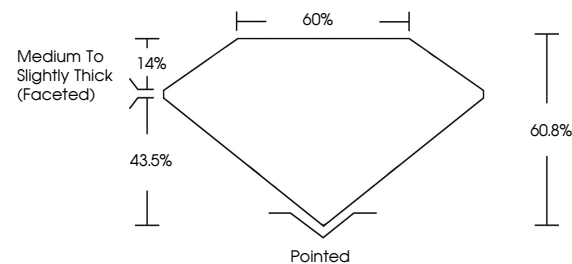
ADDITIONAL GRADING INFORMATION

Polish	EXCELLENT
Symmetry	EXCELLENT
Fluorescence	NONE
Inscription(s)	 LG705516481

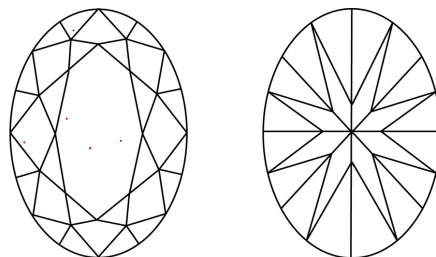
Comments: This Laboratory Grown Diamond was created by Chemical Vapor Deposition (CVD) growth process.
Type IIa

LG705516481
Report verification at igi.org

PROPORTIONS

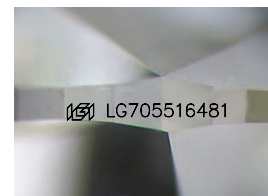


CLARITY CHARACTERISTICS



KEY TO SYMBOLS

Red symbols indicate internal characteristics.
Green symbols indicate external characteristics.



Sample Image Used

COLOR

D E F G H I J Faint Very Light Light

CLARITY

IF	VS ¹⁻²	VS ¹⁻²	SI ¹⁻²	I ¹⁻³
Internally Flawless	Very Very Slightly Included	Very Slightly Included	Slightly Included	Included

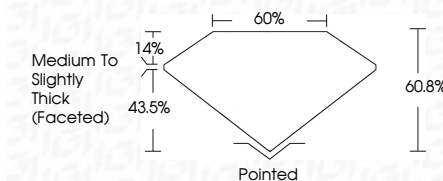
LABORATORY GROWN DIAMOND REPORT



May 2, 2025	
IGI Report Number	LG705516481
Description	LABORATORY GROWN DIAMOND
Shape and Cutting Style	OVAL BRILLIANT
Measurements	9.44 X 6.56 X 3.99 MM

GRADING RESULTS

Carat Weight	1.54 CARAT
Color Grade	D
Clarity Grade	VS 1



ADDITIONAL GRADING INFORMATION

Polish	EXCELLENT
Symmetry	EXCELLENT
Fluorescence	NONE
Inscription(s)	 LG705516481
Comments: This Laboratory Grown Diamond was created by Chemical Vapor Deposition (CVD) growth process.	
Type IIa	



© IGI 2020, International Gemological Institute

FD - 10 20



THIS DOCUMENT WAS PRODUCED WITH THE FOLLOWING SECURITY MEASURES: SPECIAL DOCUMENT PAPER, INK SCREENS, WATERMARK, BACKGROUND DESIGNS, HOLOGRAM AND OTHER SECURITY FEATURES NOT LISTED AND DO EXCEED DOCUMENT SECURITY INDUSTRY GUIDELINES

May 2, 2025
GI Report No LG705516481

GIA Report No. LG705516481	OVAL BRILLIANT		1.54 CARAT
	2.44 X 1.65 X 3.99 MM		
	Color	Weight	
	Color Grade	D	
	Clarity Grade	VS 1	
	Depth	60.8%	Medium to Slightly Thick Faceted
	Table	60%	
	Grade		
	Color		
	Clarity		
	Polish	Polished	NONE
	Symmetry	EXCELLENT	
	Fluorescence	EXCELLENT	
	Measurements	2.44 X 1.65 X 3.99 MM	
	Weight	1.54 CARAT	

Comments:
This Laboratory Grown Diamond was created by Chemical Vapor Deposition (CVD) growth process.



All certified diamonds come with an individual certificate, **ONLY** available at an accredited retailer

Certified
SUSTAINABILITY RATED
DIAMOND

SCS GLOBAL SERVICES

FOR THE SUSTAINABILITY RATED CERTIFICATE, SCAN HERE →

www.igi.org