



**ELECTRONIC COPY**

## LABORATORY GROWN DIAMOND REPORT

March 14, 2024	
IGI Report Number	LG626470310
Description	LABORATORY GROWN DIAMOND
Shape and Cutting Style	ROUND BRILLIANT
Measurements	6.82 - 6.85 X 4.26 MM

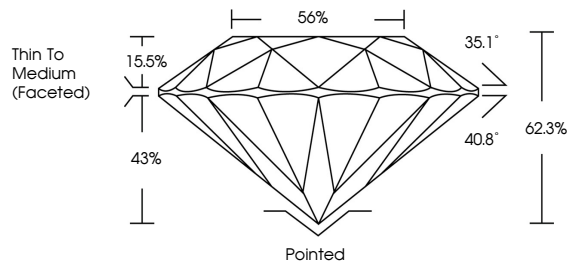
## GRADING RESULTS

Carat Weight	1.22 CARAT
Color Grade	D
Clarity Grade	VS 2
Cut Grade	IDEAL

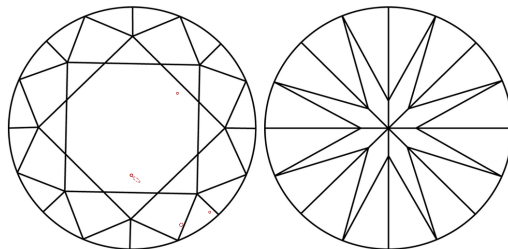
### ADDITIONAL GRADING INFORMATION

Polish	EXCELLENT
Symmetry	EXCELLENT
Fluorescence	NONE
Inscription(s)	15 LG626470310

Comments: This Laboratory Grown Diamond was created by Chemical Vapor Deposition (CVD) growth process and may include post-growth treatment.  
Type IIa



## CLARITY CHARACTERISTICS



## KEY TO SYMBOLS

Red symbols indicate internal characteristics.  
Green symbols indicate external characteristics.

## LABORATORY GROWN DIAMOND REPORT

LG626470310  
Report verification at [igi.org](https://igi.org)

LABORATORY GROWN  
DIAMOND REPORT

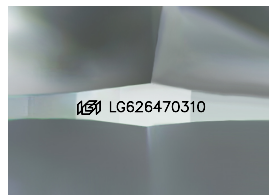
## GRADING SCALES

## CLARITY

IF	VVS <sup>1-2</sup>	VS <sup>1-2</sup>	SI <sup>1-2</sup>	I <sup>1-3</sup>
Internally Flawless	Very Very Slightly Included	Very Slightly Included	Slightly Included	Included

**COLOR**

D E F G H I J Faint Very Light Light



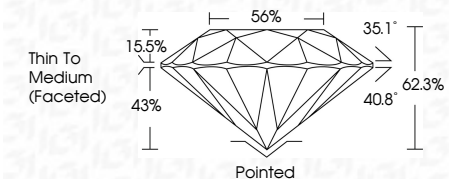
Sample Image Used




March 14, 2024	
IGI Report Number	LG626470310
Description	LABORATORY GROWN DIAMOND
Shape and Cutting Style	ROUND BRILLIANT
Measurements	6.82 - 6.85 X 4.26 MM

## GRADING RESULTS

Carat Weight	1.22 CARAT
Color Grade	D
Clarity Grade	VS 2
Cut Grade	IDEAL



### ADDITIONAL GRADING INFORMATION

Polish	EXCELLENT
Symmetry	EXCELLENT
Fluorescence	NONE
Inscription(s)	 LG626470310
<p>Comments: This Laboratory Grown Diamond was created by Chemical Vapor Deposition (CVD) growth process and may include post-growth treatment.</p> <p>Type IIa</p>	



IG

