

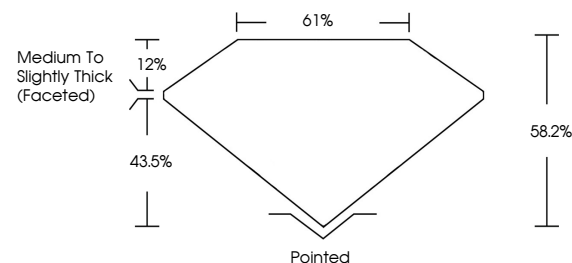


ELECTRONIC COPY

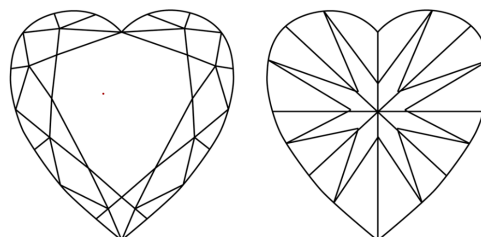
LABORATORY GROWN DIAMOND REPORT

LG640463063
Report verification at lqi.org

PROPORTIONS



CLARITY CHARACTERISTICS



KEY TO SYMBOLS

Red symbols indicate internal characteristics.
Green symbols indicate external characteristics.

COLOR

D E F G H I J Faint Very Light Light

CLARITY

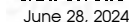
IF	VVS ¹⁻²	VS ¹⁻²	SI ¹⁻²	I ¹⁻³
Internally Flawless	Very Very Slightly Included	Very Slightly Included	Slightly Included	Included



© IGI 2020, International Gemological Institute

FD - 10 20

LABORATORY GROWN DIAMOND REPORT

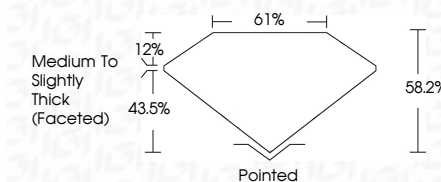
IGI Report Number **LG640463063**Description **LABORATORY GROWN DIAMOND**Shape and Cutting Style **HEART BRILLIANT**

Measurements **6.35 X 7.20 X 4.19 MM**

GRADING RESULTS

Carat Weight 1.07 CARAT

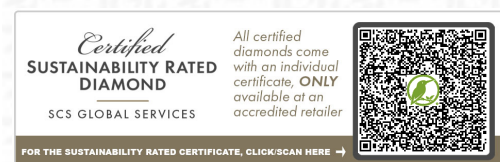
Color Grade

Clarity Grade VVS 2

ADDITIONAL GRADING INFORMATION

Polish **EXCELLENT**Symmetry **EXCELLENT**Fluorescence **NONE**Inscription(s) LG640463063

Comments: This Laboratory Grown Diamond was created by Chemical Vapor Deposition (CVD) growth process.
Type IIa



THIS DOCUMENT WAS PRODUCED WITH THE FOLLOWING SECURITY MEASURES: SPECIAL DOCUMENT PAPER, INK SCREENS, WATERMARK, BACKGROUND DESIGNS, HOLOGRAM AND OTHER SECURITY FEATURES NOT LISTED AND DO EXCEED DOCUMENT SECURITY INDUSTRY GUIDELINES

June 28, 2024
GI Report No LG640463063
HEART BRILLIANT

Canal Weight	1.07 CARAT
Color Grade	VVS 2
Clarity Grade	61%
Depth	Medium To Slightly Thick (excellent)
Table	Excellent
Grade	Excellent
Quiet	None
Polish	Excellent
Symmetry	Excellent
Fluorescence	None
Comments	gem/2640403003

Comments:
This Laboratory Grown Diamond was created by Chemical Vapor Deposition (CVD) growth process.