

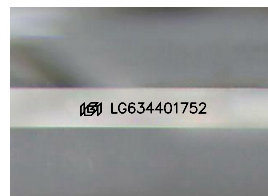
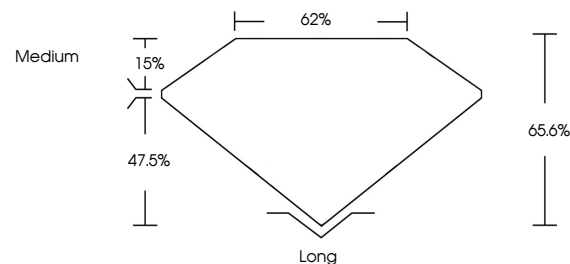


**ELECTRONIC COPY**

## LABORATORY GROWN DIAMOND REPORT

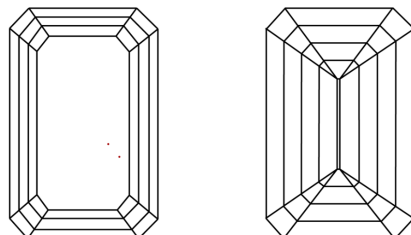
LG634401752  
Report verification at [lgi.org](https://lgi.org)

## PROPORTIONS



Sample Image Used

## CLARITY CHARACTERISTICS



## KEY TO SYMBOLS

Red symbols indicate internal characteristics.  
Green symbols indicate external characteristics.

## COLOR

D E F G H I J Faint Very Light Light

## CLARITY

IF	VVS <sup>1-2</sup>	VS <sup>1-2</sup>	SI <sup>1-2</sup>	I <sup>1-3</sup>
Internally Flawless	Very Very Slightly Included	Very Slightly Included	Slightly Included	Included



© IGI 2020, International Gemological Institute

FD - 10 20

## DIAMOND REPORT



May 13, 2024

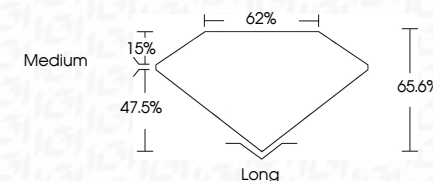
IGI Report Number **LG634401752**Description **LABORATORY GROWN DIAMOND**Shape and Cutting Style **EMERALD CUT**

Measurements **7.12 X 4.86 X 3.19 MM**

## GRADING RESULTS

Carat Weight 1.06 CARAT

Color Grade G

Clarity Grade WS 2

### ADDITIONAL GRADING INFORMATION

Polish **EXCELLENT**Symmetry **EXCELLENT**Fluorescence **NONE**Inscription(s)  LG634401752

Comments: This Laboratory Grown Diamond was created by Chemical Vapor Deposition (CVD) growth process and may include post-growth treatment.  
Type IIa



IG

May 13, 2024  
GI Report No LG634401752

1.12 X 4.86 X 3.19 MM	Carat Weight	1.06 CARAT
	Color Grade	G
	Clarity Grade	VVS 2
	Depth	65.6%
	Table	62%
	Girdle	Medium
	Culet	Long
	Polish	EXCELLENT
	Symmetry	EXCELLENT
	Fluorescence	NONE
	Report Number(s)	6491155/6491752

**Comments:**  
This Laboratory Grown Diamond was created by Chemical Vapor Deposition (CVD) growth process and may include post-growth treatment.