



ELECTRONIC COPY

LABORATORY GROWN DIAMOND REPORT

August 2, 2022

IGI Report Number **LG539217142**

Description	LABORATORY GROWN DIAMOND
-------------	-----------------------------

Shape and Cutting Style **OVAL BRILLIANT**

Measurements 8.12 X 5.79 X 3.62 MM

GRADING RESULTS

Carat Weight 1.06 CARAT

Color Grade E

Clarity Grade VS 1

ADDITIONAL GRADING INFORMATION

Polish EXCELLENT

Symmetry **EXCELLENT**

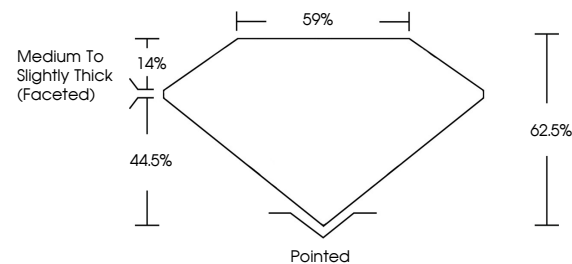
Fluorescence **NONE**

Inscription(s) LABGROWN IGI LG539217142

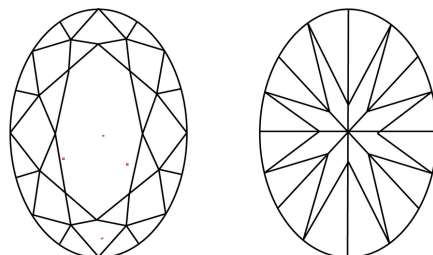
Comments: This Laboratory Grown Diamond was created by Chemical Vapor Deposition (CVD) growth process and may include post-growth treatment.
Type IIa

LG539217142

PROPORTIONS



CLARITY CHARACTERISTICS

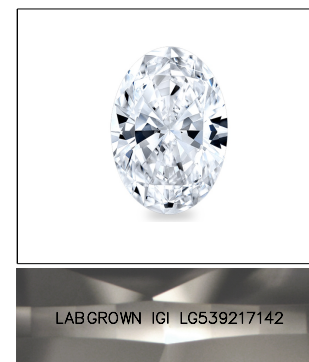


KEY TO SYMBOLS

Red symbols indicate internal characteristics.
Green symbols indicate external characteristics.

GRADING SCALES

COLOR GRADING SCALE	CL		NC	FT	VL	LT
	COLORLESS D-F		NEAR COLORLESS G-J	FAINT K-M	VERY LIGHT N-R	LIGHT S-Z
CLARITY (10x) GRADING SCALE	FL	IF	VVS	VS	SI	I
	FLAWLESS INTERNALLY FLAWLESS		VERY VERY SLIGHTLY INCLUDED	VERY SLIGHTLY INCLUDED	SLIGHTLY INCLUDED	INCLUDED

LASERSCRIBESM

Sample Image Used



© IGI 2020, International Gemological Institute

FD - 10 20

LABORATORY GROWN DIAMOND REPORT

August 2, 2022	
IGI Report Number	LG539217142
Description	LABORATORY GROWN

Shape and Cutting Style **OVAL BRILLIANT**

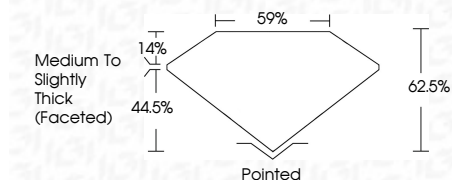
Measurements **8.12 X 5.79 X 3.62 MM**

GRADING RESULTS

Carat Weight 1.06 CARAT

Color Grade E

Clarity Grade VS 1



ADDITIONAL GRADING INFORMATION

Polish **EXCELLENT**

Symmetry **EXCELLENT**

Fluorescence **NONE**

Inscription(s) LABGROWN IGI LG539217142

Comments: This Laboratory Grown Diamond was created by Chemical Vapor Deposition (CVD) growth process and may include post-growth treatment.
Type IIa



August 2, 2022	GI Permit No. LG5921742	1.06 CARAT
DYAL BRILLIANT	Color Grade	VS 1
A 1.2 x 4.75 x 3.62 MM	Clarity Grade	62.5%
	Depth	59%
	Table	Medium to Slightly Thick (Faceted)
	Girdle	
	Culet	Pointed
	Polish	EXCELLENT
	Symmetry	EXCELLENT
	Fluorescence (Inscriptions)	NONE
	Comments:	LABGROWN 1st LG5921742
		This Laboratory Gem Diamond was created by Chemical Vapor Deposition (CVD) growth process and may include post-growth treatment.
		Type IId