



**ELECTRONIC COPY**

## LABORATORY GROWN DIAMOND REPORT

May 24, 2022

IGI Report Number **LG530293887**

Description	LABORATORY GROWN DIAMOND
-------------	-----------------------------

Shape and Cutting Style **OVAL BRILLIANT**

Measurements **8.31 X 5.91 X 3.65 MM**

## GRADING RESULTS

Carat Weight	1.10 CARAT
--------------	------------

Color Grade D

Clarity Grade **VS 2**

### ADDITIONAL GRADING INFORMATION

Polish **EXCELLENT**

Symmetry **EXCELLENT**

Fluorescence **NONE**

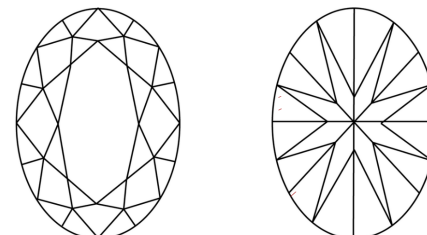
Inscription(s) **LABGROWN | G | LG530293887**

Comments: As Grown - No indication of post-growth treatment.  
This Laboratory Grown Diamond was created by High Pressure High Temperature (HPHT) growth process.  
Type II

Diagram illustrating the proportions of a faceted diamond, labeled LG530293887. The diagram shows a diamond shape with various measurements and labels:

- Top Label:** LG530293887
- Title:** PROPORTIONS
- Left Side Label:** Medium To Slightly Thick (Faceted)
- Measurements:**
  - Top width: 58.5%
  - Left side depth: 14%
  - Left side width: 44.5%
  - Right side depth: 61.8%
- Bottom Label:** Pointed

## CLARITY CHARACTERISTICS

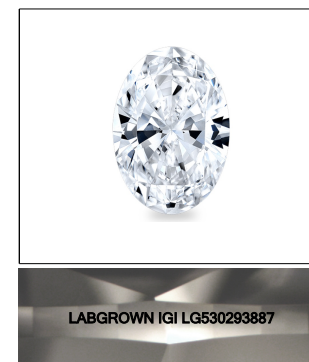


## KEY TO SYMBOLS

Red symbols indicate internal characteristics.  
Green symbols indicate external characteristics.

## GRADING SCALES

COLOR GRADING SCALE	CL		NC	FT	VL	LT
	COLORLESS D-F	NEAR COLORLESS G-J		FAINT K-M	VERY LIGHT N-R	LIGHT S-Z
CLARITY (10x) GRADING SCALE	FL	IF	VVS	VS	SI	I
	FLAWLESS INTERNALLY FLAWLESS		VERY VERY SLIGHTLY INCLUDED	VERY SLIGHTLY INCLUDED	SLIGHTLY INCLUDED	INCLUDED

LASERSCRIBE<sup>SM</sup>

Sample Image Used



© IGI 2020, International Gemological Institute

FD - 10 20

## LABORATORY GROWN DIAMOND REPORT

May 24, 2022	
IGI Report Number	LG530293887
Description	LABORATORY GROWN

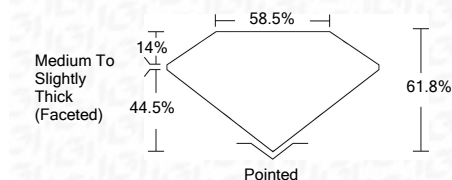
Shape and Cutting Style **OVAL BRILLIANT**

Measurements **8.31 X 5.91 X 3.65 MM**

## GRADING RESULTS

Carat Weight **1.10 CARAT**

Color Grade D

Clarity Grade **VVS 2**

### ADDITIONAL GRADING INFORMATION

Polish **EXCELLENT**Symmetry **EXCELLENT**Fluorescence **NONE**

Inscription(s) **LABGROWN IGI LG530293887**

Comments: As Grown - No indication of post-growth treatment.  
This Laboratory Grown Diamond was created by High Pressure High Temperature (HPHT) growth process.  
Type II



May 24, 2022	Report No. LG30293887
COVAL BRILLIANT	
3.31 X 5.61 X 3.85 MM	
Carat Weight	1.10 CARAT
Color Grade	D
Clarity Grade	VVS 2
Depth	61.8%
Table	58.5%
Girdle	Medium to Slightly Thick (Faceted)
Culet	Pointed
Polish	EXCELLENT
Symmetry	EXCELLENT
Fluorescence	NONE
Inscription(s)	LABGROWN IGI LG30293887
Comments:	
<p>As Grown - No indication of post-growth</p> <p>The Laboratory Grown Diamond was created by High Pressure High Temperature (HPHT) growth process.</p>	