



**ELECTRONIC COPY**

## LABORATORY GROWN DIAMOND REPORT

Description	LABORATORY GROWN DIAMOND
Shape and Cutting Style	EMERALD CUT
Measurements	7.16 X 4.72 X 3.03 MM

## GRADING RESULTS

Carat Weight	1.02 CARAT
Color Grade	G
Clarity Grade	VS 2

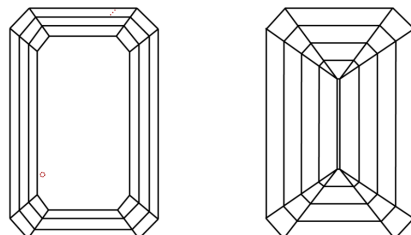
### ADDITIONAL GRADING INFORMATION

Polish	EXCELLENT
Symmetry	EXCELLENT
Fluorescence	NONE

Inscription(s) **LABGROWN IGI LG544261345**  
 Comments: This Laboratory Grown Diamond was created by Chemical Vapor Deposition (CVD) growth process and may include post-growth treatment. Type IIa

Diagram illustrating the layout of a diamond-shaped plot for the LG544261345 experiment. The plot is a diamond shape with dimensions: top width 64.5%, bottom width 64.2%, left height 47%, and right height 64.2%. The left side is labeled 'dium' and the bottom side is labeled 'Long'.

## CLARITY CHARACTERISTICS

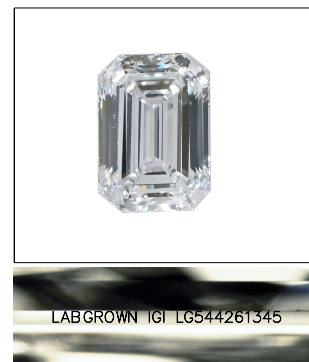


## KEY TO SYMBOLS

Red symbols indicate internal characteristics.  
Green symbols indicate external characteristics.

## GRADING SCALES

COLOR GRADING SCALE	CL		NC		FT		VLT		LT	
	COLORLESS D-F		NEAR COLORLESS G-J		FAINT K-M		VERY LIGHT N-R		LIGHT S-Z	
CLARITY (10x) GRADING SCALE	FL	IF	VVS		VS		SI		I	
	FLAWLESS INTERNALLY FLAWLESS		VERY VERY SLIGHTLY INCLUDED		VERY SLIGHTLY INCLUDED		SLIGHTLY INCLUDED		INCLUDED	

LASERSCRIBE<sup>SM</sup>

Sample Image Used

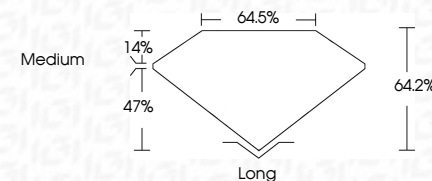


© IGI 2020, International Gemological Institute

FD - 10 20

LABORATORY GROWN DIAMOND REPORT

August 27, 2022	
IGI Report Number	LG544261345
Description	LABORATORY GROWN DIAMOND
Shape and Cutting Style	EMERALD CUT
Measurements	7.16 X 4.72 X 3.03 MM
<b>GRADING RESULTS</b>	
Carat Weight	1.02 CARAT
Color Grade	G
Clarity Grade	VS 2



### ADDITIONAL GRADING INFORMATION

Polish	EXCELLENT
Symmetry	EXCELLENT
Fluorescence	NONE
Inscription(s)	LABGROWN IGI LG544261345

Comments: This Laboratory Grown Diamond was created by Chemical Vapor Deposition (CVD) growth process and may include post-growth treatment.  
Type IIa



August 27, 2022	Report No. LG544261345
EMRAD CJT	
1.15 X 4.72 X 3.03 MM	1.02 CARAT
Color Grade	G
Clarity Grade	VS 2
Depth	64.2%
Table	64.5%
Girdle	Medium
Culet	Long
Polish	EXCELLENT
Symmetry	EXCELLENT
Fluorescence	NONE
Inscriptions(s)	LAGROWIN LG544261345
Comments:	
This Laboratory Grown Diamond was certified as a Type IIa (very low nitrogen) (CVD) growth process and may include post-growth treatment.	
Type Ila	